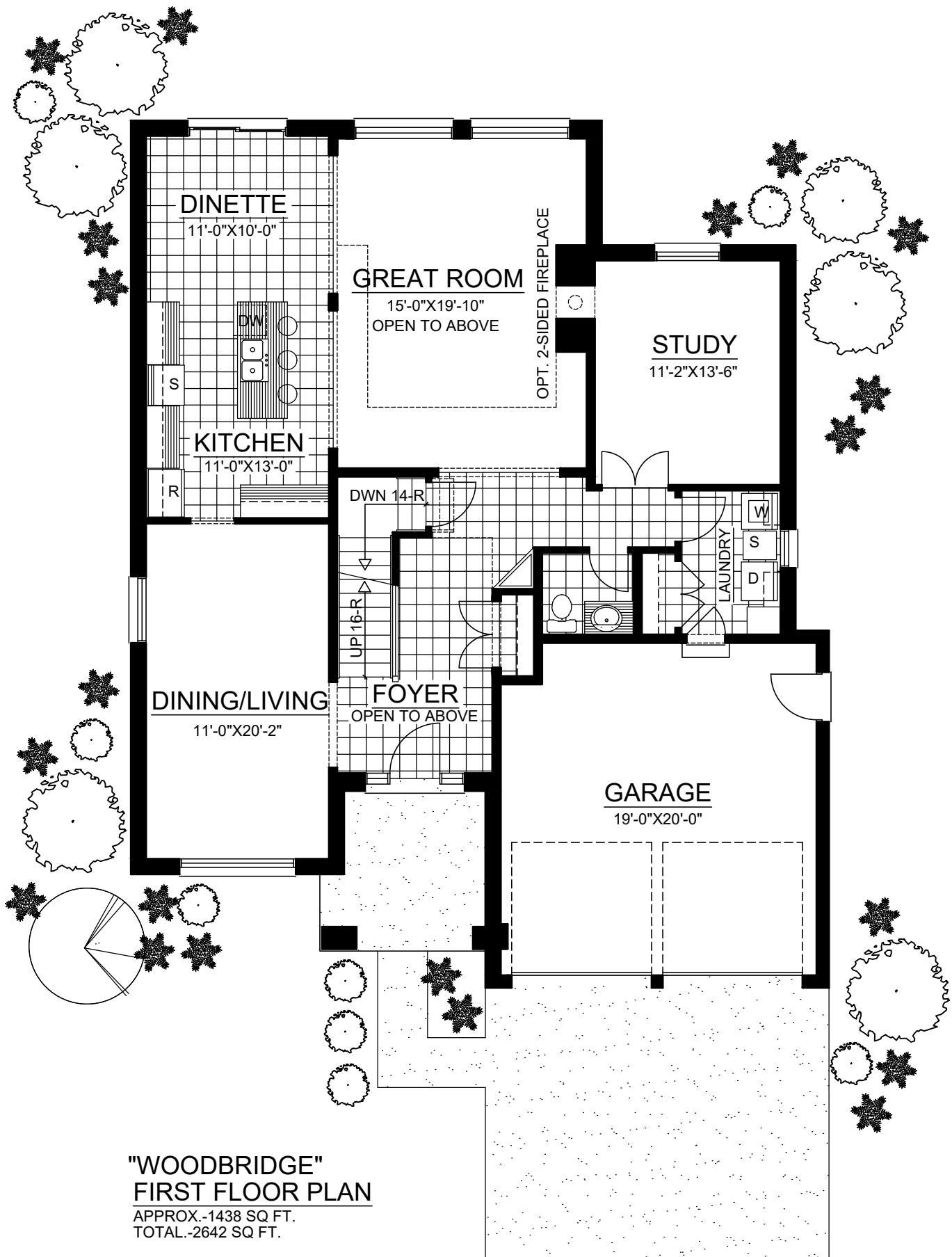
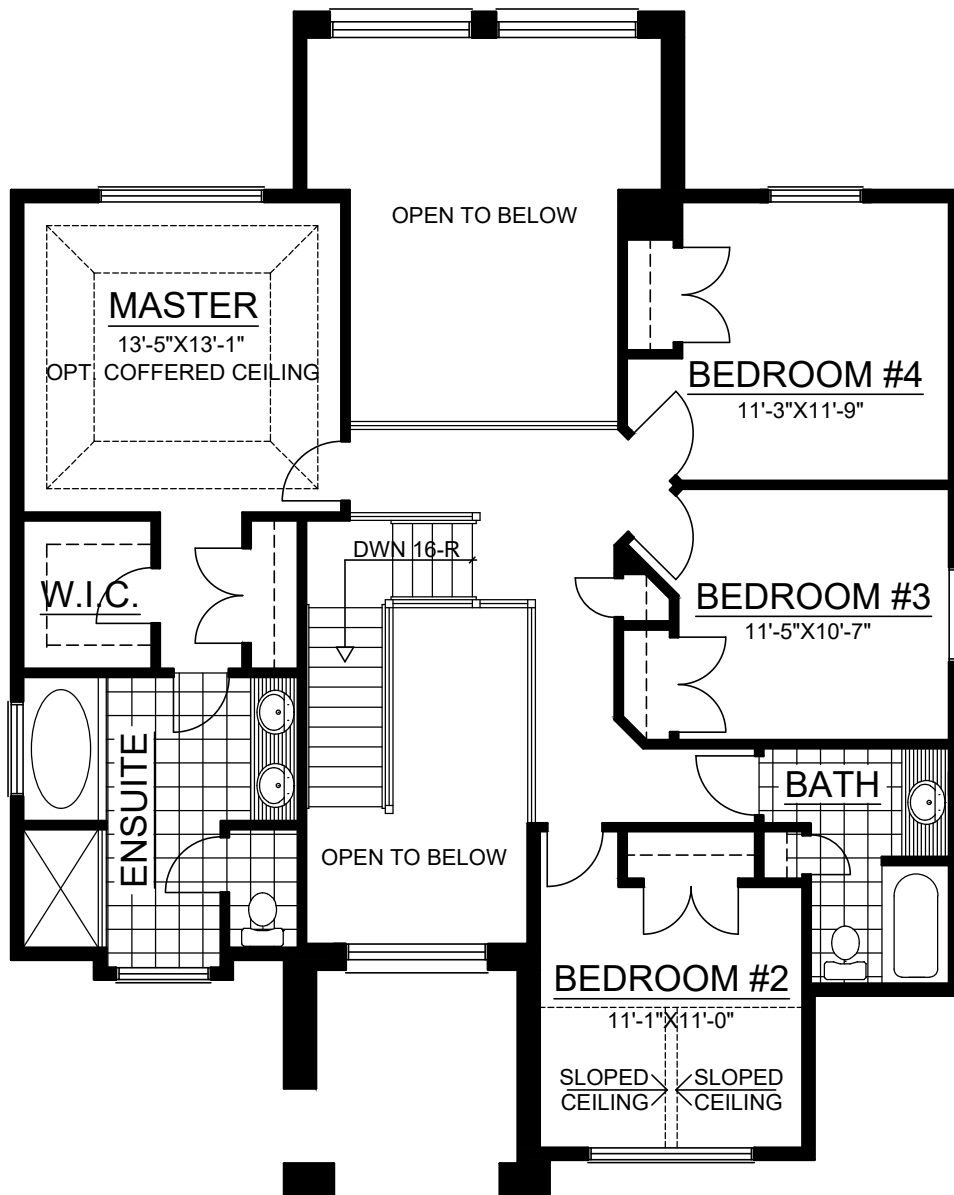


"WOODBIDGE"
FOUNDATION PLAN
TOTAL.-2642 SQ FT.



"WOODBRIIDGE"
FIRST FLOOR PLAN
 APPROX.-1438 SQ. FT.
 TOTAL.-2642 SQ. FT.



**"WOODBIDGE"
SECOND FLOOR PLAN**

APPROX.-1538 (GROSS) SQ FT.
 APPROX.-1204 (NET) SQ FT.
 TOTAL.-2642 SQ FT.



"WOODBRIDGE"
FRONT ELEVATION
TOTAL -2642 SQ FT.