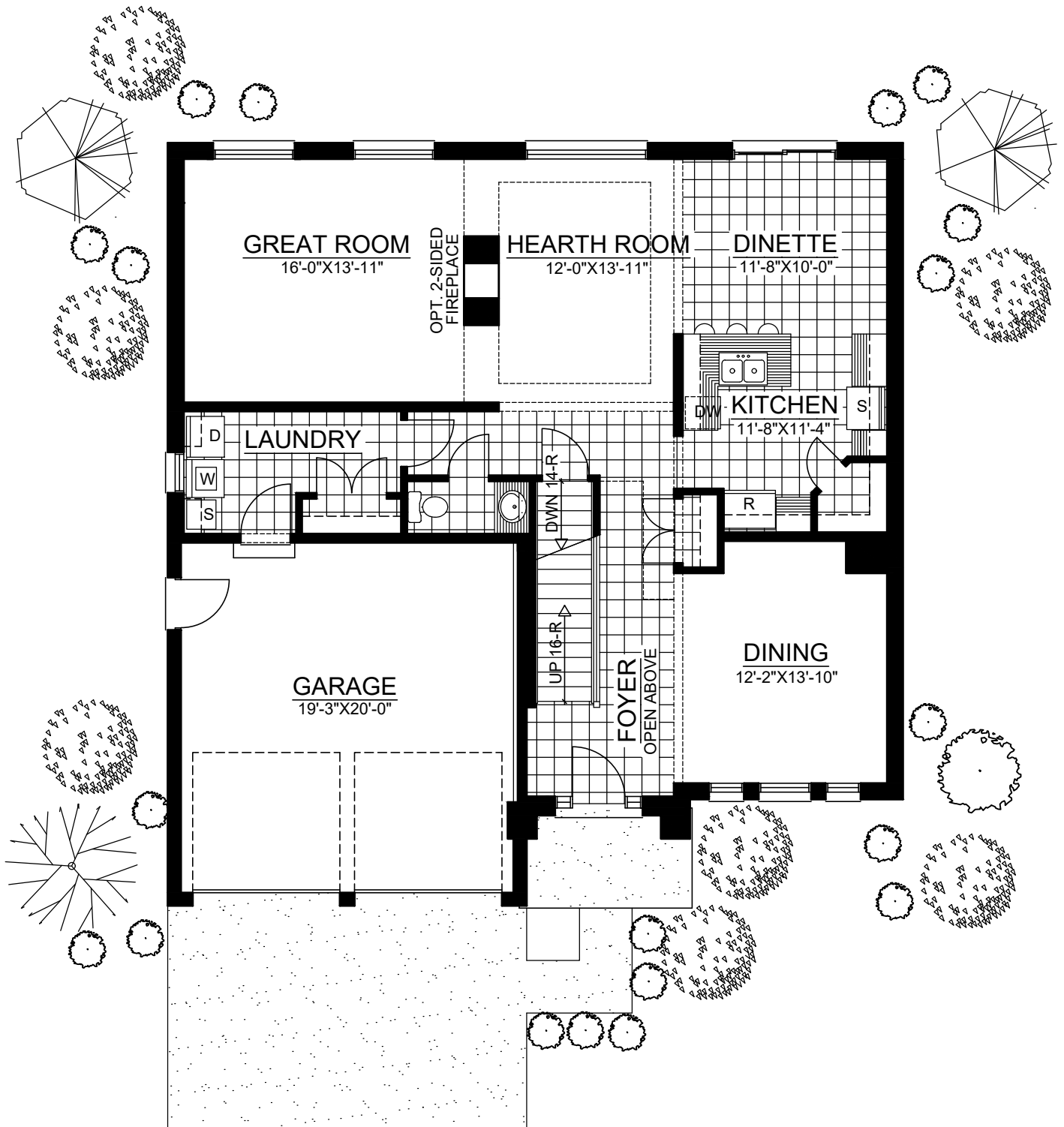
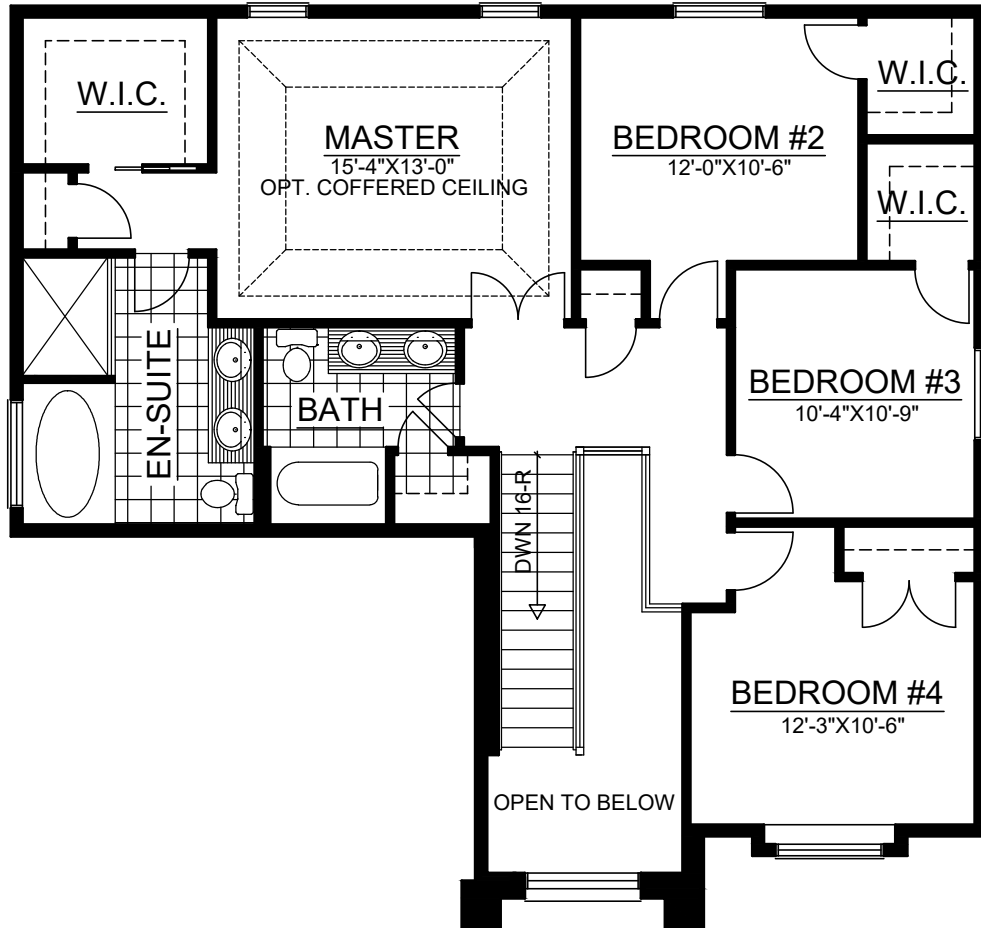


"PROVIDENCE"
FOUNDATION PLAN
TOTAL. 2478 SQ FT.



"PROVIDENCE"
FIRST FLOOR PLAN
 APPROX. 1292 SQ. FT.
 TOTAL. 2478 SQ. FT.



**"PROVIDENCE"
SECOND FLOOR PLAN**

APPROX.-1274 SQ FT. (GROSS)
 APPROX.-1187 SQ FT. (NET)
 TOTAL. 2478 SQ FT.



"PROVIDENCE"
FRONT ELEVATION
TOTAL. 2487 SQ FT.