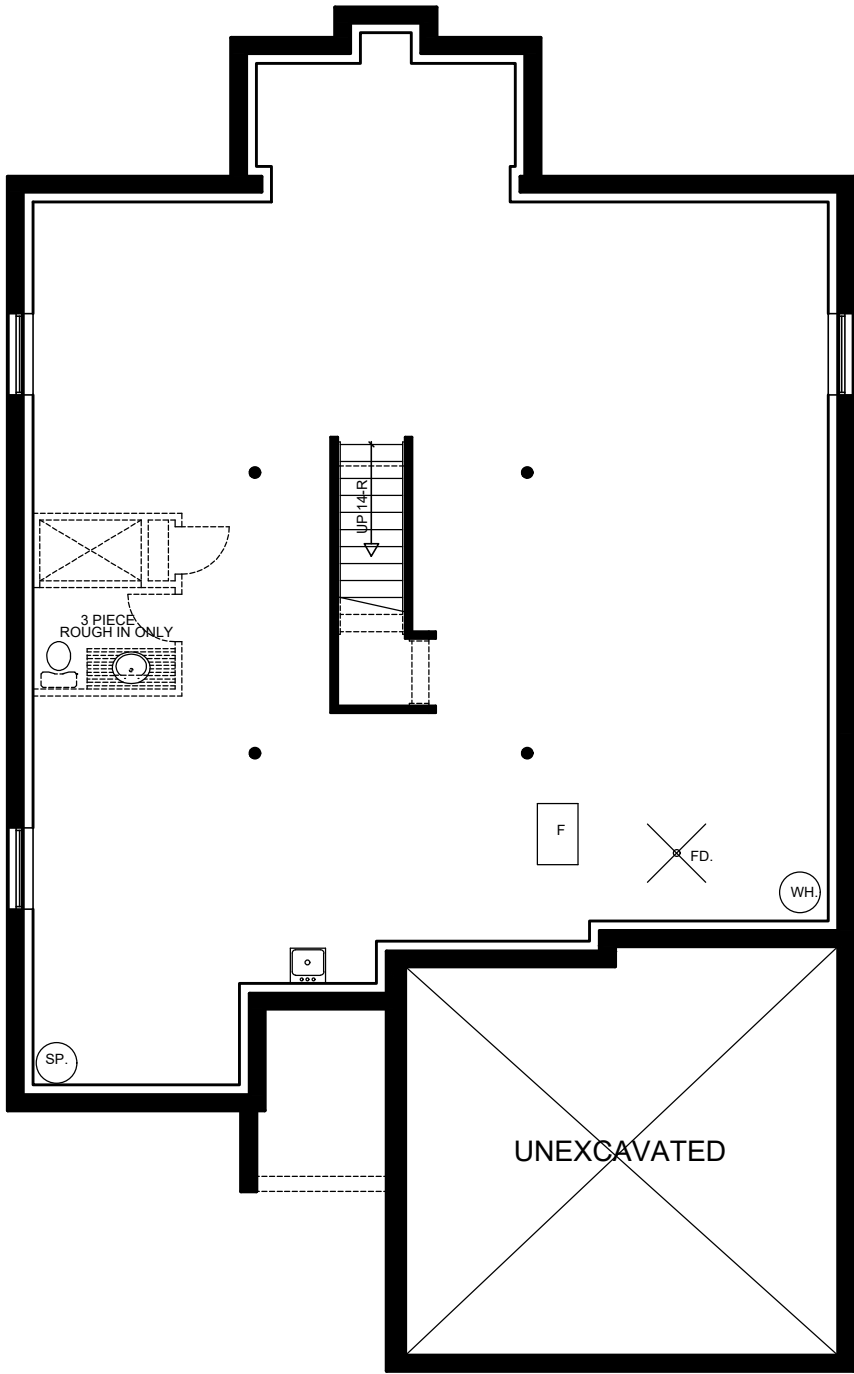




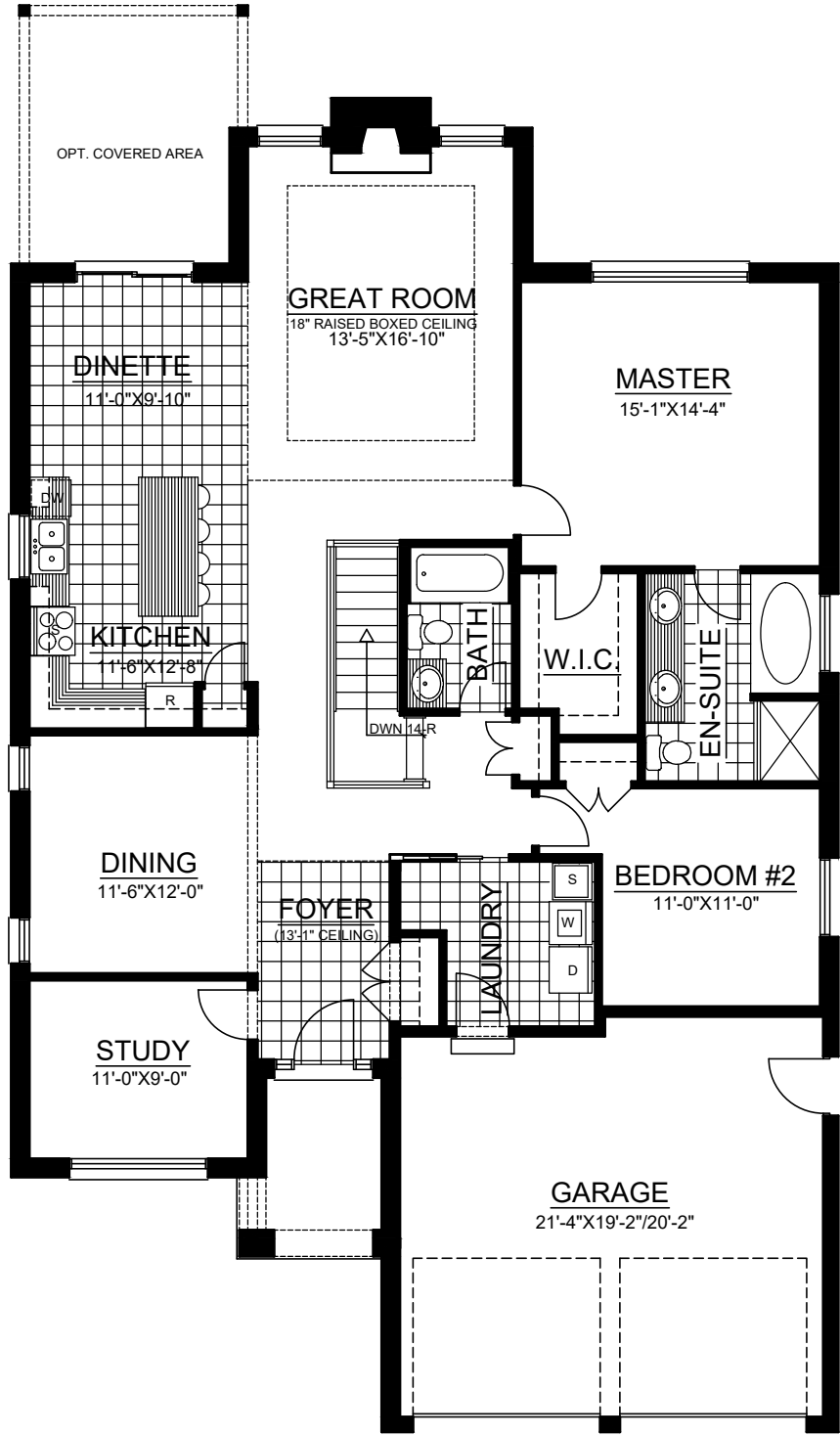
"MONTEREY"
FRONT ELEVATION
TOTAL APPROX. - 1826 SQ FT.

REVISED 2022



"MONTEREY"
FOUNDATION PLAN
TOTAL APPROX.- 1826 SQ FT.

REVISED 2022



"MONTEREY"
FIRST FLOOR PLAN
 TOTAL APPROX.- 1826 SQ. FT.