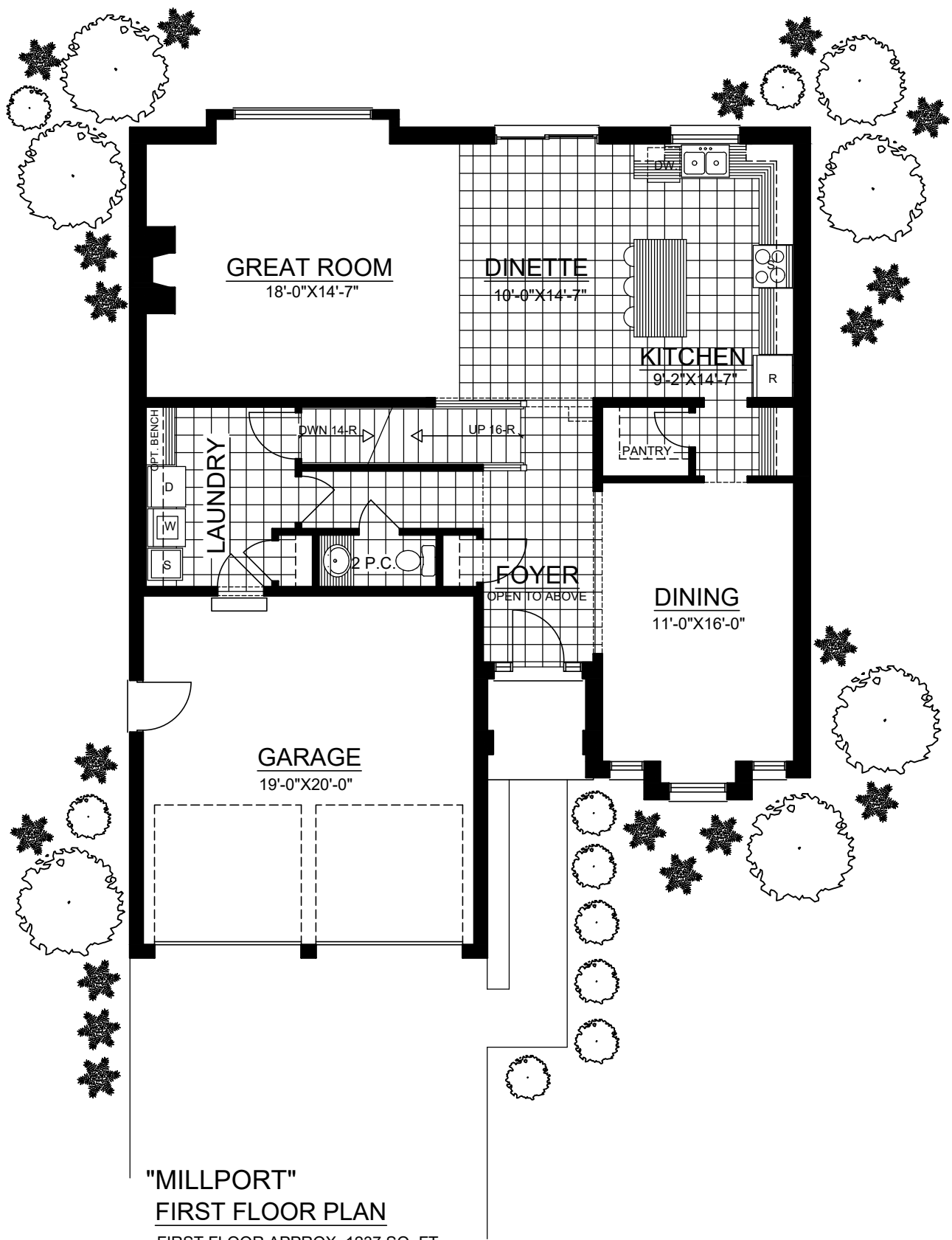
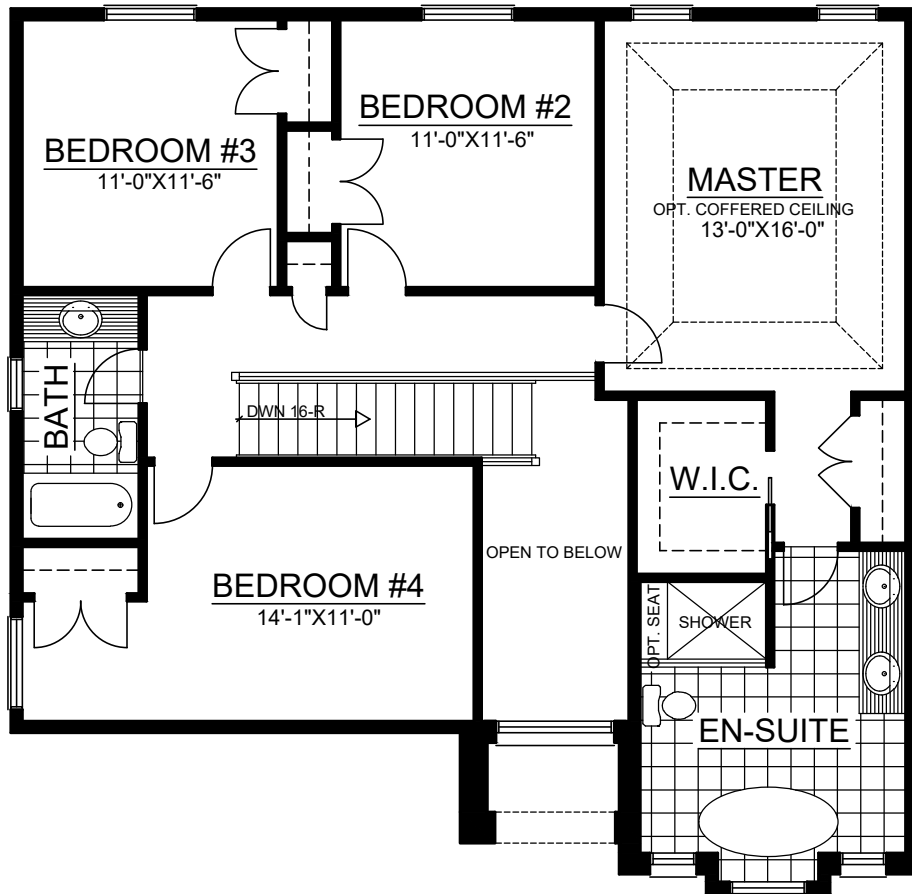


"MILLPORT"
FOUNDATION PLAN
TOTAL APPROX.- 2450 SQ FT.



"MILLPORT"
FIRST FLOOR PLAN
 FIRST FLOOR APPROX. 1237 SQ. FT.
 TOTAL APPROX. - 2450 SQ. FT.



"MILLPORT"
SECOND FLOOR PLAN

APPROX.- 1301 (GROSS) SQ FT.

APPROX.- 1213 (NET) SQ FT.

TOTAL APPROX.- 2450 SQ FT.



"MILLPORT"
FRONT ELEVATION

TOTAL APPROX.- 2450 SQ FT.