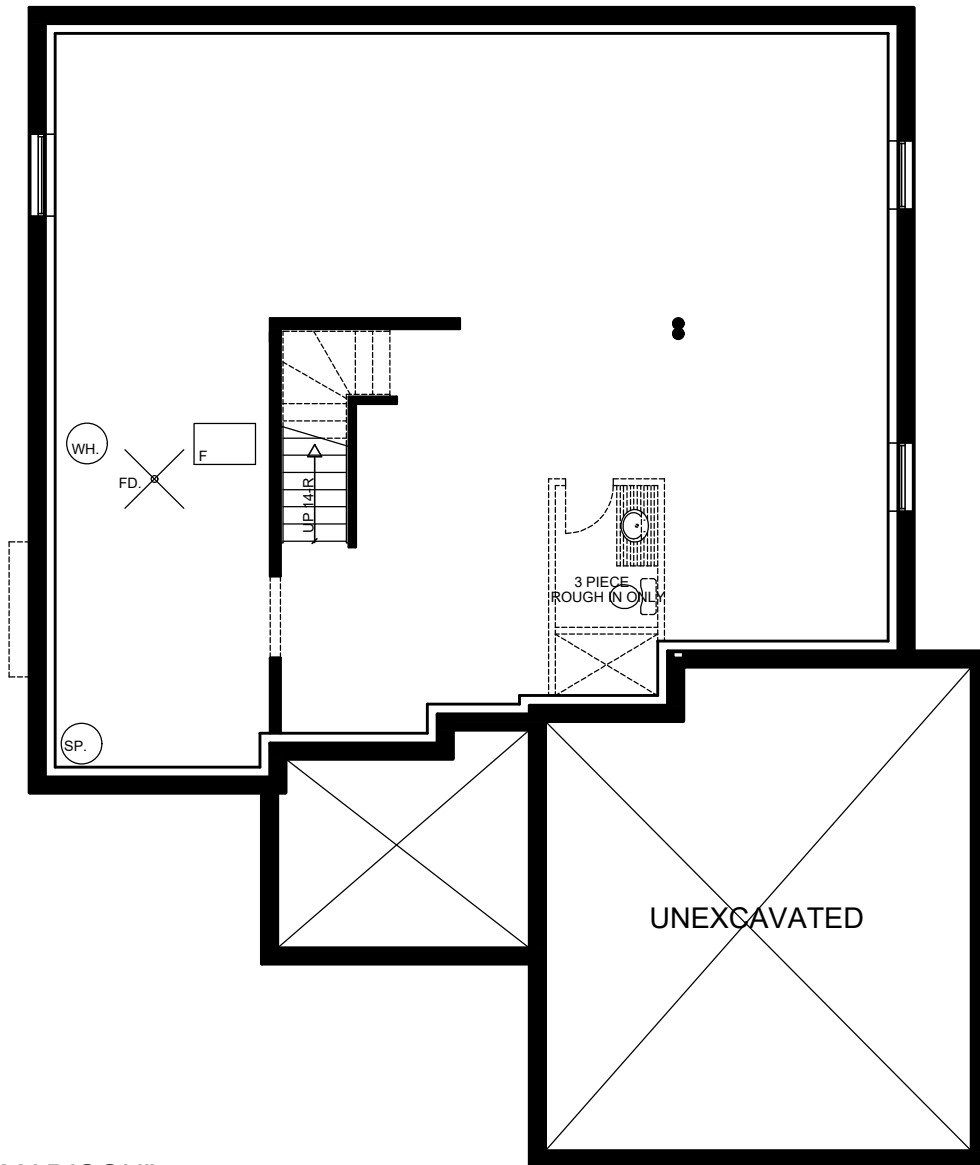




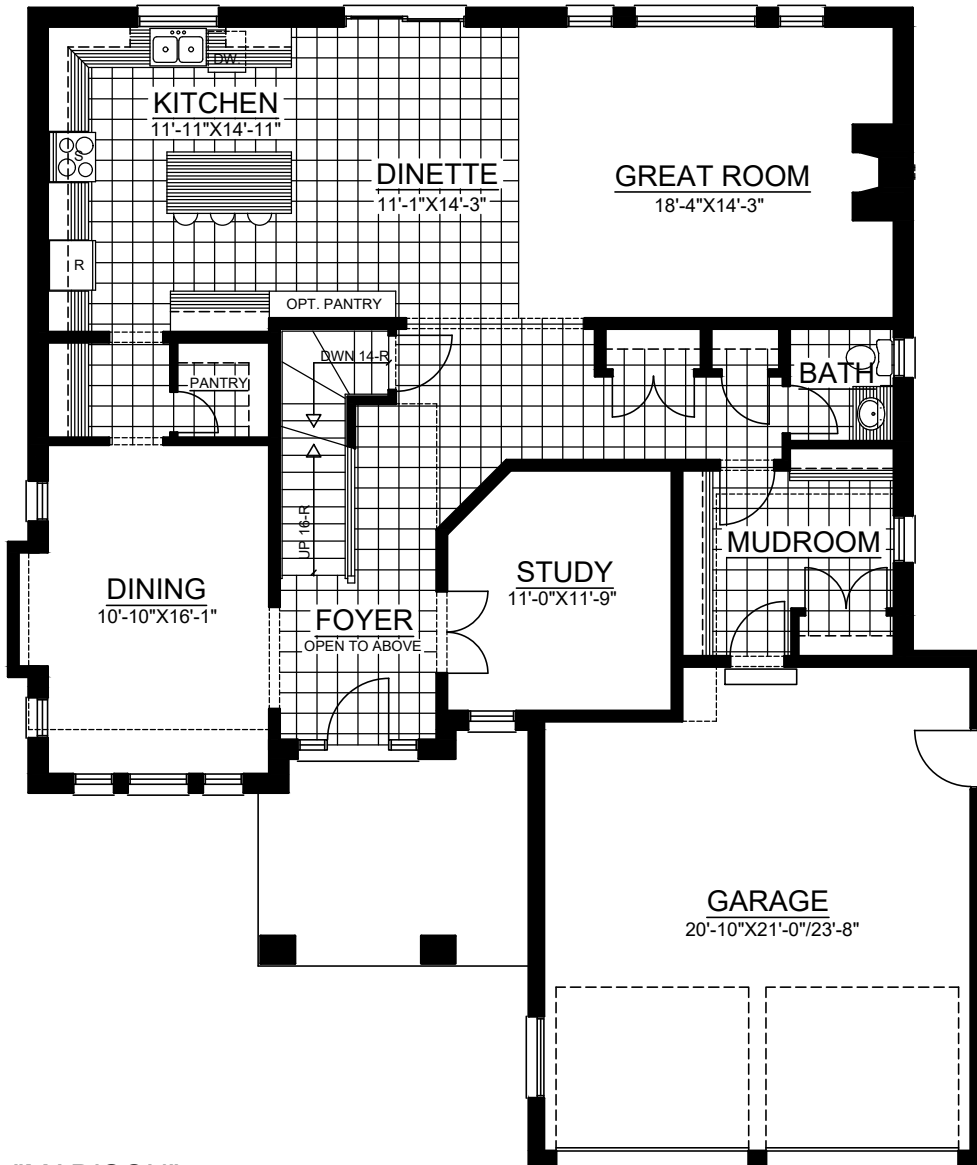
"MADISON"
FRONT ELEVATION "A"
TOTAL APPROX. - 2870 SQ FT.



"MADISON"
FRONT ELEVATION "B"
TOTAL APPROX. - 2870 SQ FT.

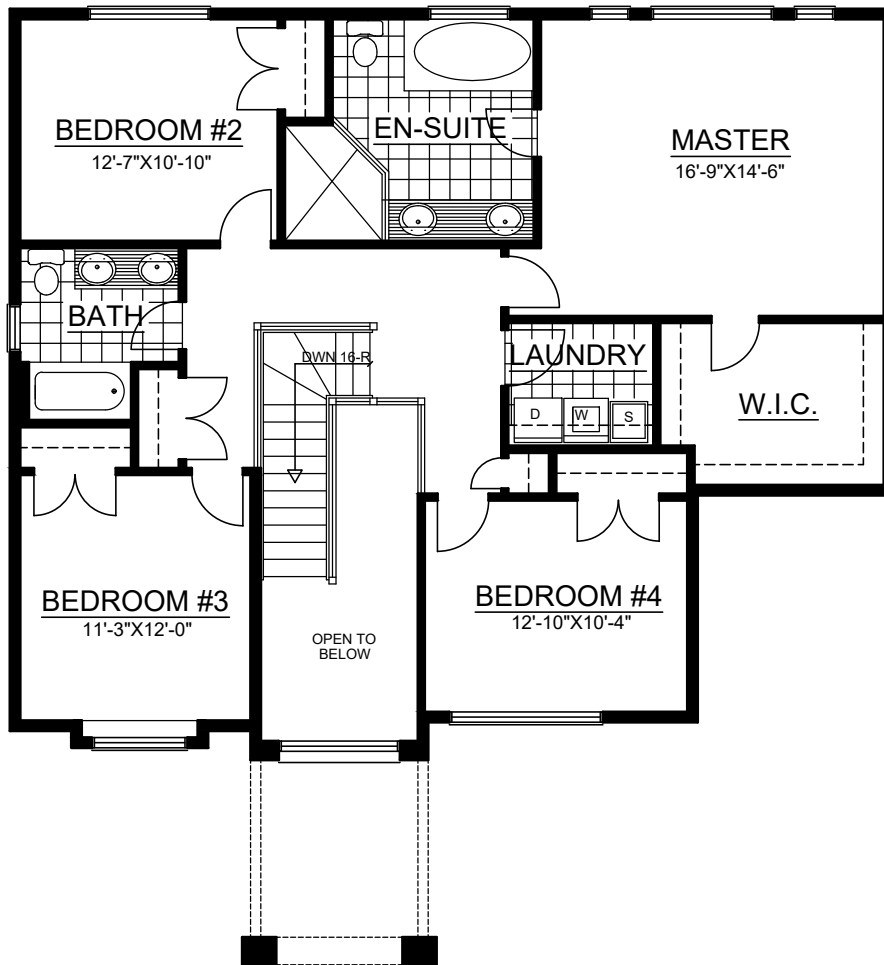


"MADISON"
FOUNDATION PLAN
TOTAL APPROX. - 2870 SQ FT.



**"MADISON"
FIRST FLOOR PLAN**

APPROX. 1541 SQ FT
TOTAL APPROX. - 2870 SQ FT.



**"MADISON"
SECOND FLOOR PLAN**

APPROX. 1424 SQ FT (GROSS)
 APPROX. 1329 SQ FT (NET)
 TOTAL APPROX. - 2870 SQ FT.