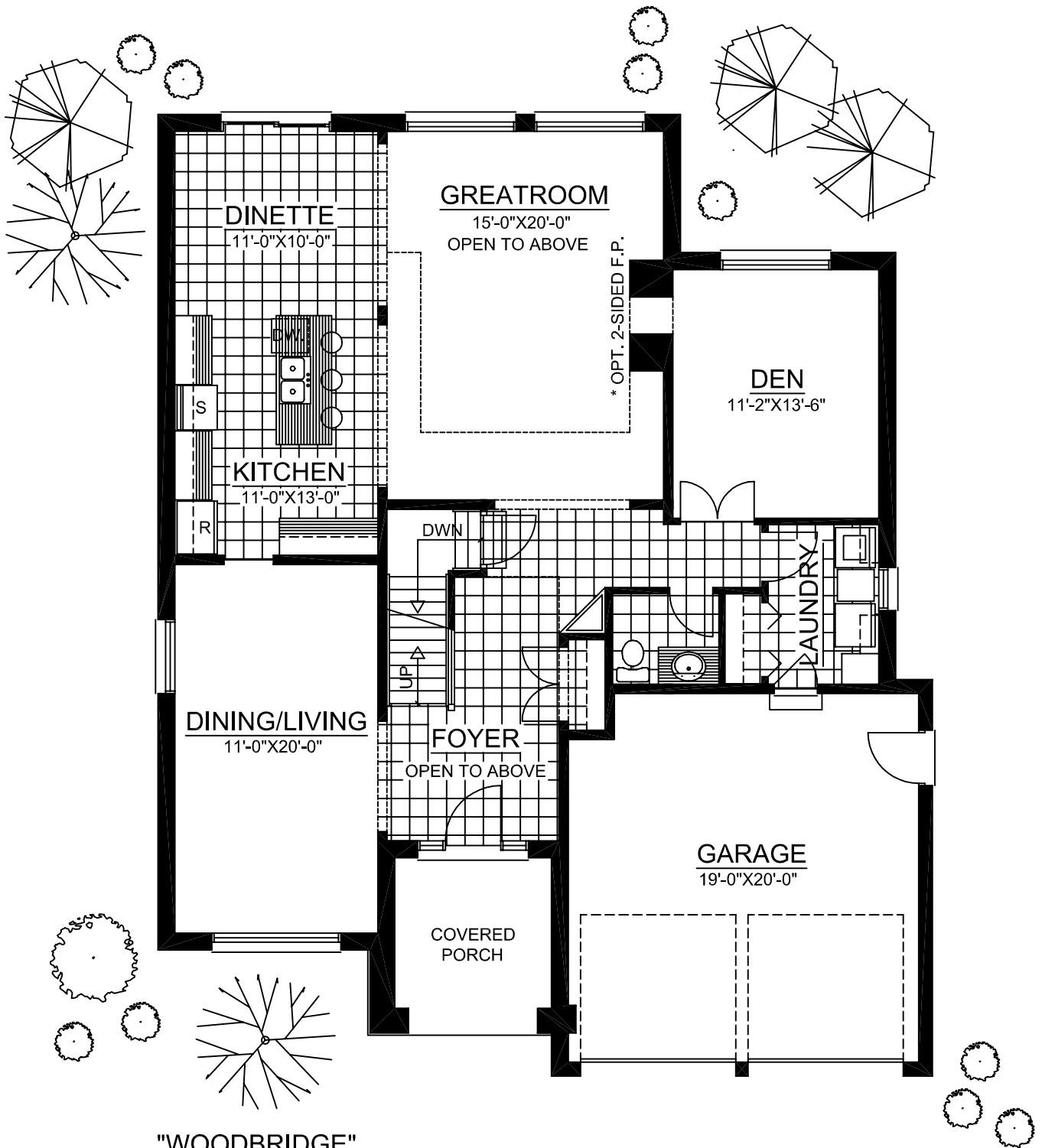


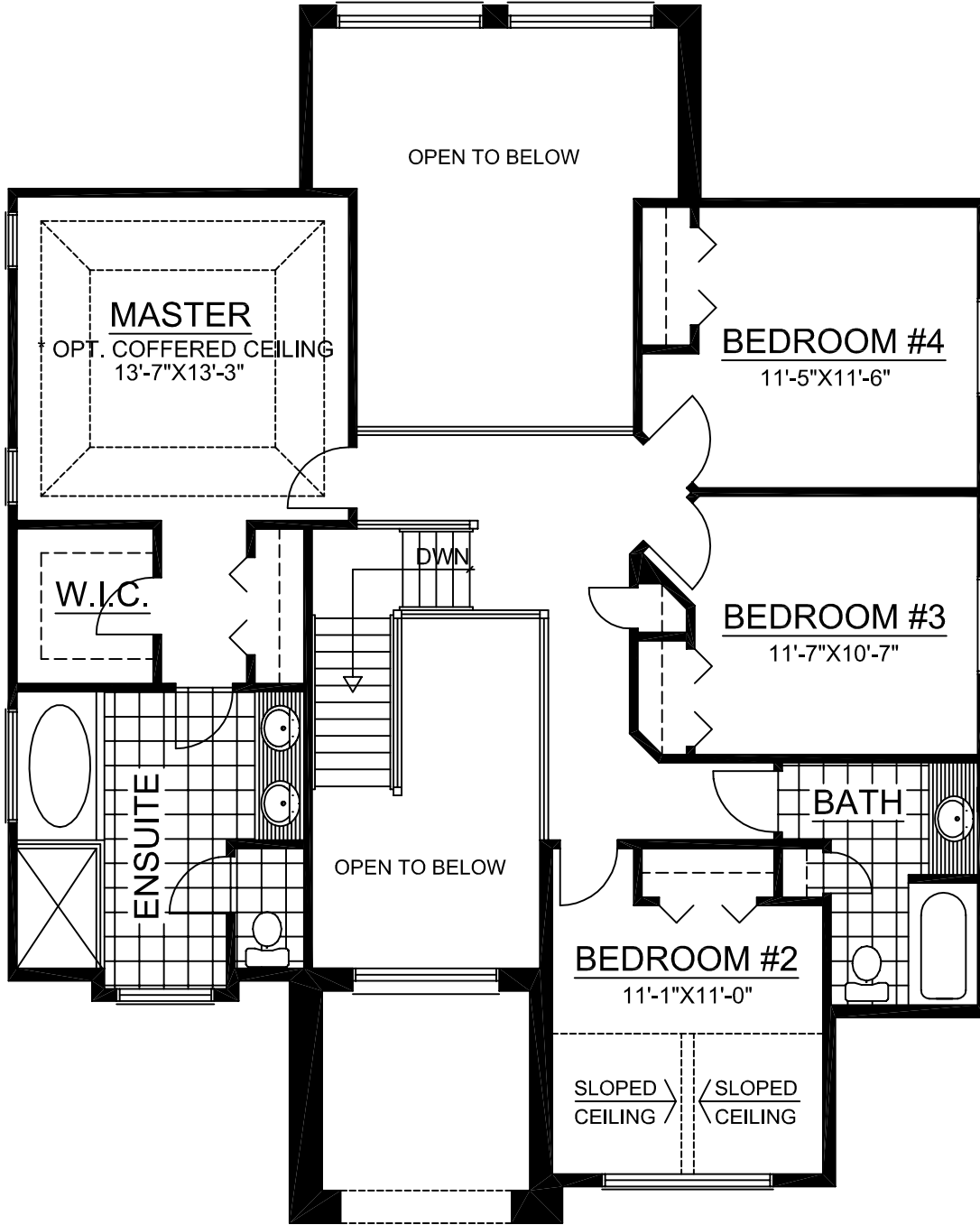


"WOODBRIDGE"
FRONT ELEVATION

TOTAL APPROX. 2612 SQ FT.

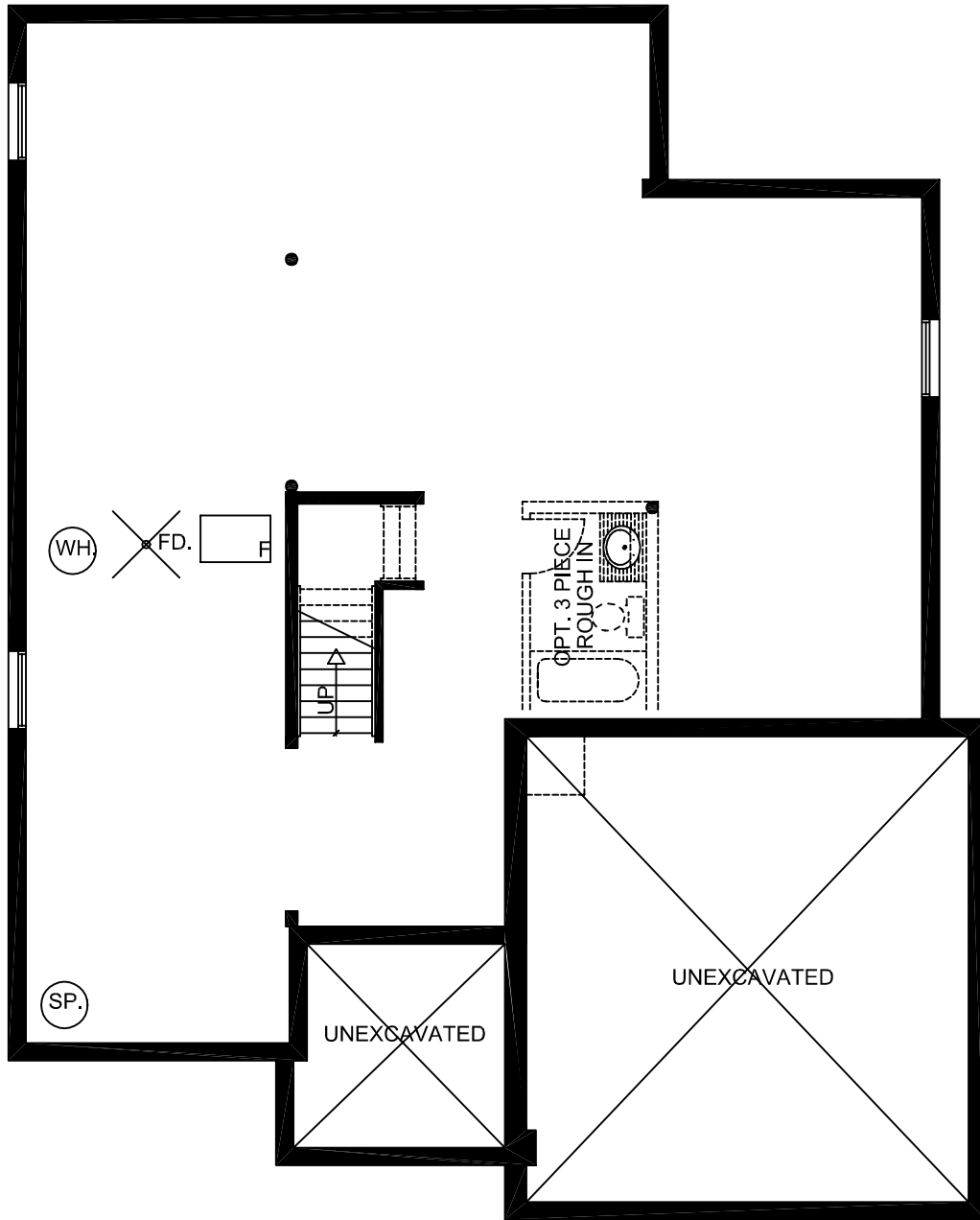


"WOODBRIDGE"
FIRST FLOOR PLAN
 TOTAL APPROX. 2612 SQ. FT.



"WOODBRIDGE"
SECOND FLOOR PLAN

TOTAL APPROX. 2612 SQ FT.



"WOODBRIDGE"
FOUNDATION PLAN
TOTAL APPROX. 2612 SQ FT.