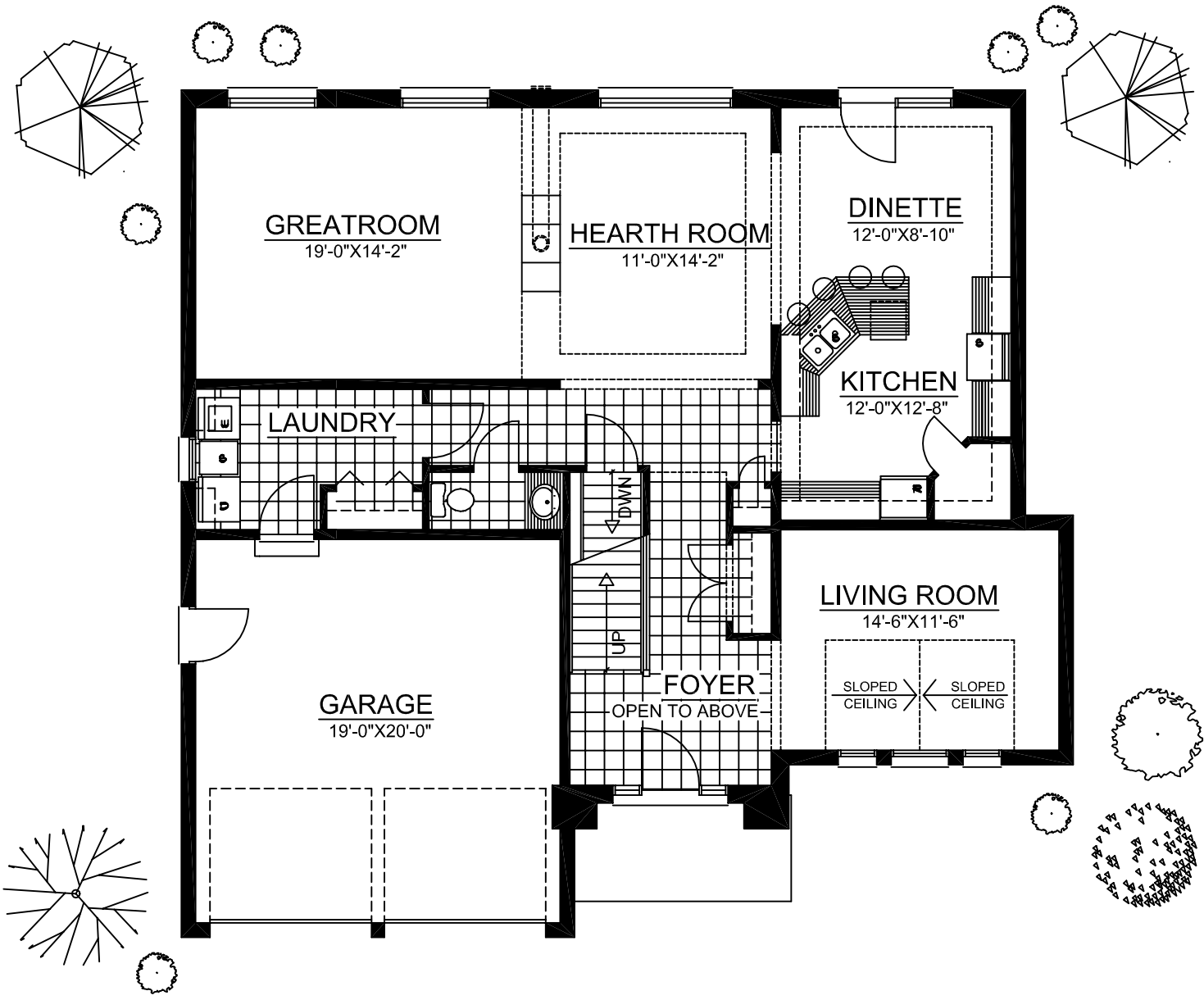
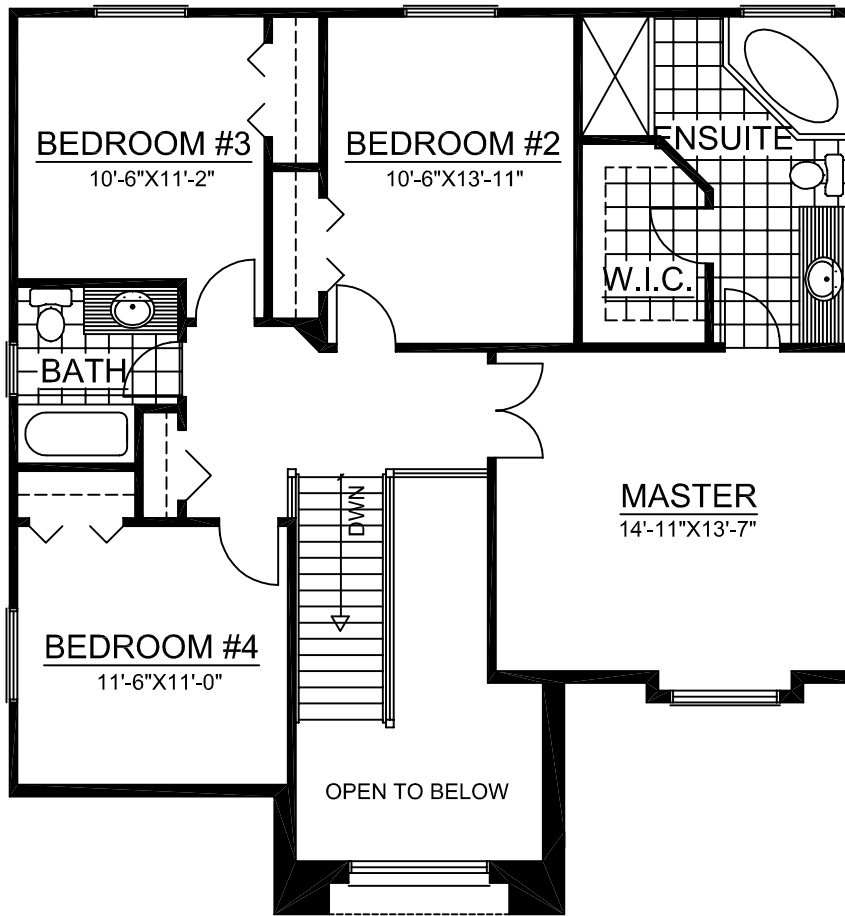




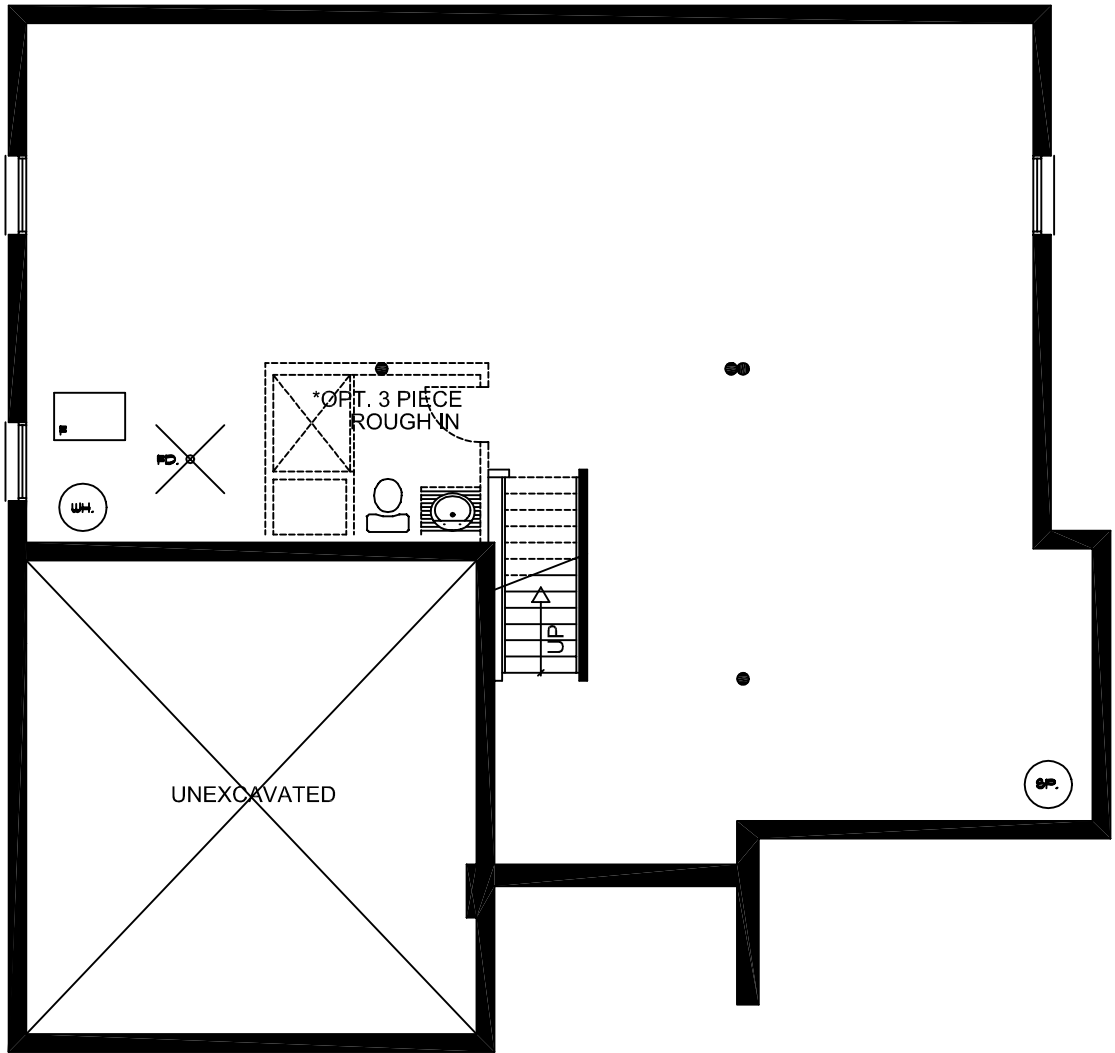
PROVIDENCE
FRONT ELEVATION
TOTAL APPROX. 2460 SQ. FT.



PROVIDENCE
MAIN FLOOR PLAN
 TOTAL APPROX. 2460 SQ. FT.



PROVIDENCE
SECOND FLOOR PLAN
TOTAL APPROX. 2460 SQ FT.



PROVIDENCE
FOUNDATION PLAN
TOTAL APPROX. 2460 SQ. FT.